



Progress Energy

Center for the Performing Arts

A.J. FLETCHER OPERA
THEATER TECHNICAL
PACKAGE

REV. Jan. 2010

-
- 2 East South Street Raleigh, NC 27601
 - 919-831-6238 (phone)
 - 919-831-6237 (fax)



Progress Energy

Center for the Performing Arts

A.J. FLETCHER OPERA THEATER
TECHNICAL PACKAGE
PAGE 2 OF 21
REV. JAN. 2010

GENERAL INFORMATION

VENUE INFORMATION

The A. J. Fletcher Opera Theatre hosts a wide variety of events from community programs to small bus and truck national tours along with numerous regional companies including Carolina Ballet and Opera Company of NC. Three additional halls, Raleigh's Memorial Auditorium, The Meymandi Concert Hall and The Kennedy Theatre, are also a part of the Progress Energy Center for the Performing Arts.

LOCATION:

The A. J. Fletcher Opera Theatre is located at the southern end of Fayetteville Street, downtown Raleigh, between Salisbury, South, and Wilmington Streets.



GENERAL INFORMATION

Directions to the Progress Energy Center for the Performing Arts

- [From I-40 / West Raleigh](#)

Take I-40 East toward Raleigh. From I-40 take exit 298-B. Turn right on South Saunders St. Go 1.5 miles north on S. Saunders St. Turn right onto South St. Go 2 blocks. The Progress Energy Center for the Performing Arts is on the right.

- [From US-1 / Capital Blvd. / North Raleigh](#)

Take US-1 South into Raleigh. US-1 becomes Capital Blvd. Stay on Capital Blvd., crossing over I-440 (the Beltline). After you cross I-440 go another 3.4 miles south. Capital Blvd. becomes Dawson St. Go 10 blocks south on Dawson St. (0.8 miles). Turn left onto South St. Go 3 blocks on South St. The Progress Energy Center for the Performing Arts is on the right.

- [From US-70 / Glenwood Ave. / Northwest Raleigh](#)

From Glenwood Avenue / US-70, follow the US-70 E. signs toward downtown Raleigh. US-70 travels along Glenwood Avenue, turns onto Wade Avenue, then exits onto Capital Blvd. heading south. Capital Blvd. becomes Dawson St. Go 10 blocks south on Dawson St. (0.8 miles). Turn left onto South St. Go 3 blocks on South St. The Progress Energy Center for the Performing Arts is on the right.

- [From US-64 / New Bern Ave. / East Raleigh](#)

Take US-64 West toward Raleigh. US-64 becomes New Bern Ave. Follow New Bern Ave., crossing over I-440. After you cross I-440 go another 2.5 miles west. New Bern Ave. then becomes Edenton St. Go 1.2 miles on Edenton St., pass the State Capitol and turn left onto Dawson St. Turn left onto South St. Go 3 blocks on South St. The Progress Energy Center for the Performing Arts is on the right.

- [All Trucks / Show Transport / Deliveries](#)

From I-40 / I-440, take exit 298-B. Turn north on S. Saunders. Go 0.5 miles and bear right on S. McDowell. **To Meymandi Dock:** Drive 0.7 miles. Turn right onto South St. Turn next right on Salisbury. Dock is in Kennedy Theatre parking lot on left. **To Fletcher and Memorial Docks:** Drive 0.5 miles to Martin Luther King exit. At top of exit ramp, turn right on MLK. Turn left at second traffic light onto Wilmington. Second driveway on left leads into dock and parking area.



HOUSE POLICIES

- **Event Personnel:** A PECPA Production Supervisor must be present in the theatre for ANY activity within the building. A crew minimum of three (3) technicians is required for any event. For safety and security of the audience during an event, a minimum of three (3) ushers, one (1) uniformed police officer, and one (1) non-uniformed officer will be required.
- **Theatre Entrance:** Production personnel will most often enter through the doors at the rear of the building. Any building activity occurring during non-business hours (Mon-Fri, 8:00am-5:00pm) will require a door guard to be posted.
- **Parking:** Production personnel park in Lot F, a gravel parking area at the corner of Salisbury and MLK Blvd. Parking passes are arranged through the Production Supervisor. At no time will parking be allowed in the loading dock. Violators will be towed.
- **Decorating:** At no time shall decorations or equipment be placed in or on the building, walls or corridors, nor shall any signage be supported by nails, tacks, screws or tape on walls, doors, railings or woodwork without prior approval by the Production Supervisor. Painting, staining, or any other scenic treatment is not permitted in the theatre. Helium balloons are never allowed in the building.
- **Lobby Set-ups:** Arrangements for tables, chairs, skirting, easels or related items must be made in advance of the event with the Front of House Manager.
- **Food & Drink:** At no time are food and drink permitted onstage, in the house or control booths.
- **Smoking:** The entire building is a no smoking facility.
- **Telephones and Internet:** Phone and high speed data lines can be contracted for a client's needs in most areas of the complex.

HOUSE POLICIES

- **Delivery and Pick-up:** All deliveries must be scheduled with the Production Supervisor. Upon load out of an event, all related equipment and material must be removed. Anything left in the building subsequent to an event will be disposed of.
- **Expendables:** PECPA can provide hardware, lumber, gel, tape, office supplies or other expendables at additional costs.

SPECIAL EFFECTS:

Any pyrotechnic effects will require a permit which will be obtainable on the behalf of the client. Please provide at least two weeks notice along with a diagram showing locations and types of effects intended. The client will also need to provide an MSDS for each effect as well as flame-proofing certificates for all scenery used in the show.

Pyrotechnics and atmospheric effects (CO₂ fog or chemical haze or smoke) will affect our fire alarm sensors and require fire watch personnel. Any open flame, violation of the fire curtain line, or altering or obscuring any fire exit or path to a fire exit, will also require fire watch personnel.

IMPORTANT NOTE:

At no time will any individual not directly connected to the production and familiar with its execution be allowed onstage or backstage. Arrangements should be made for friends and family to meet company members in the lobby. *This is not negotiable.*

Any scenery, curtains, furniture, or flying drops used in a production in our theatres should be either, a) fabricated from materials certified as inherently flame retardant, or b) treated in some fashion with a certified flame retardancy chemical treatment in the methods outlined by the manufacturer of that chemical. We reserve the right to request any applicable certificates, affidavits or receipts indicating such, and the right to deny use of any questionable materials or scenery.



Center for the Performing Arts

A.J. FLETCHER OPERA THEATER
TECHNICAL PACKAGE
PAGE 6 OF 21
REV. JAN. 2010

TECHNICAL LABOR INFORMATION

All labor is provided by the Progress Energy Center for the Performing Arts (PECPA). Crew calls should be supplied to the Production Supervisor as far in advance of the event as possible. There is no full time stage crew; all technicians are scheduled by the Production Supervisor per the client's request and billed accordingly. Unscheduled calls or changes which arise during the production process should be communicated to the Production Supervisor in a timely manner so as to ensure the most qualified personnel are secured. Cancellation of scheduled calls is subject to full labor charges if all attempts to contact crew personnel are unsuccessful.

Calls are scheduled at a four (4) hour minimum and no more than five (5) hours between meal breaks. There is a minimum two (2) hour call back from a meal break on continuous calls. Meal breaks are either a one (1) hour unpaid break, or a half (½) hour break that is paid and catered. Fifteen (15) minute breaks are taken at the mid-point of each call. Work cannot be scheduled in overtime without the Production Supervisor's approval.

Overtime (payable at 1 ½ times the current pay rate) will be assessed for any work done between midnight and 8am, or when the production requires the same person to work more than forty (40) hours in one pay-week that runs from Monday morning until the end of load out Sunday night.

PECPA is owned and operated by the City of Raleigh. To ensure the safety of personnel, patrons and property, no one except City of Raleigh Stage Technicians may operate any house owned equipment. At no time will the failure to fulfill a call allow persons other than City of Raleigh employees to operate any house equipment. PECPA retains the right to approve decorators, contractors or other service personnel employed by the client.

Safety to persons and property is considered the most important rule of consideration. If at any time the well being of staff, patrons or equipment is threatened or jeopardized, it is within the power of the house staff to terminate these actions immediately.



STAGE INFO AND MEASUREMENTS

SEATING CAPACITY:

604

LOADING ACCESS:

One truck high loading bay is located on the east side (Wilmington Street) adjacent to the stage house. The bay area is 15' x 20' with a roll up door to USL and to an outside staging area. Portable dock plate is available.

- Loading Dock: 10'-0" wide x 10'-0" high, 4'-0" above street level
- Stage roll up door: 9'-6" wide x 10'-0" high

PROSCENIUM:

Height: 28'-0" (not architectural) Width: 44'-6"

STAGE DECK:

- Height: 3'-0" from the auditorium floor
(Two sets of removable steps access the house directly from the apron)
- Depth: Plaster Line to US wall: 38'-6"
- Plaster Line to Apron edge: 1'-6"
- Total stage depth: 40'-0"
- Width: Center Line to SL wall: 32'-0"
- Center Line to SR fly rail: 30'-0"

The deck surface is black, recycled plastic floor panels. Lagging into or painting the deck is not permitted.



STAGE INFO AND MEASUREMENTS

ORCHESTRA PIT:

Please see attached drawing.

- Width: 31'-6"
- Depth: 10'-7" at center of the arc

The orchestra pit is a mechanical lift that can be set at any height from orchestra to stage level. The access to the orchestra pit during performance is through the house, pit door or from the stage. Access from the house is only allowed when the pit is at house level. The lift cannot be operated during a performance or at any time while the general public is in the auditorium, without special consent of the Production Supervisor.

DRESSING ROOMS:

Please see attached drawing.

There are two dressing rooms on stage level, one with private bathroom. At the basement level there are eight dressing rooms with lighted mirrors, shelves and clothes racks that seat between 5 and 12 people each. There are also bathrooms with showers for men and women. Loading downstairs can be from street level or from the stage level via a passenger elevator. The elevator door measures 6'-11" high and 47" wide. The interior is 5' wide and 7'-8" deep.

A washer and dryer are located on the basement level. Dry cleaning service can be arranged. Clothes hangers or towels can be provided at additional charge.



STAGE INFO AND MEASUREMENTS

FLY SYSTEM:

The fly system is a JR Clancy single purchase counterweight system. The operating rail is located on the deck SR. Hemp Pin Rails are also located SL and SR 25' above the deck. The hemp rails run the full depth of the stage with pins on 12" centers. The loading bridge for the arbors is located at SR at 52' above the deck. All SR rail positions are accessed by a ladder on the USR wall or auditorium stairwell. The SL rail and the grid are accessed by an auditorium stairwell.

LINESETS:

The A.J. Fletcher Theater has 54 linesets on average 6" centers. House battens are 1½" sch. 40 pipe; weighing 160 lbs., with 6 pick-up lines on approximate 12' centers.

Sheaves are underhung and *cannot* be kicked. Please see attached line schedule.

- Batten length: 60'-0"
- Grid Height: 58'-10"
- Out Trim: 57'-0"
- In Trim: 3'-9"
- Arbors: Height: 9'-6" Weight capacity: 2000 lbs.
- Counterweight: Steel bricks are 5" wide, 17 or 34 lbs.



STAGE INFO AND MEASUREMENTS

STANDARD HOUSE HANG - LINESET SCHEDULE:

| Line # | Dist. from PL | House Hang | Line # | Dist. from PL | House Hang |
|--------|---------------|----------------------------------|--------|---------------|---------------------------|
| 1 | 2'-5" | Border | 28 | 19'-5" | Electric 3 |
| 2 | 2'-11" | Legs | 29 | 20'-5" | Legs (spare) |
| 3 | 3'-5" | | 30 | 20'-11" | White RP Screen |
| 4 | 4'-5" | Electric 1 | 31 | 21'-5" | |
| 5 | 5'-5" | | 32 | 22'-5" | |
| 6 | --- | | 33 | 22'-11" | Border |
| 7 | 6'-5" | | 34 | 23'-5" | Legs |
| 8 | 6'-11" | | 35 | 23'-11" | |
| 9 | 7'-5" | Border (full stage black, split) | 36 | 24'-5" | |
| 10 | 7'-11" | Legs | 37 | 25'-5" | |
| 11 | 8'-5" | | 38 | 25'-11" | |
| 12 | --- | | 39 | 26'-5" | |
| 13 | 9'-5" | | 40 | 27'-5" | Electric 4 |
| 14 | 10'-5" | | 41 | 28'-5" | |
| 15 | 11'-5" | Electric 2 | 42 | 28'-11" | Border |
| 16 | 12'-5" | | 43 | 29'-5" | Legs |
| 17 | 12'-11" | | 44 | 30'-5" | |
| 18 | 13'-5" | | 45 | 31'-5" | Black Scrim |
| 19 | 13'-11" | | 46 | 32'-5" | Electric 5 |
| 20 | 14'-5" | | 47 | --- | |
| 21 | 15'-5" | Border | 48 | 33'-5" | |
| 22 | 15'-11" | Legs | 49 | 33'-11" | |
| 23 | 16'-5" | | 50 | 34'-5" | |
| 24 | 16'-11" | | 51 | 35'-5" | |
| 25 | 17'-5" | Border (full stage black, split) | 52 | 35'-11" | |
| 26 | --- | | 53 | 36'-5" | Border (full stage black) |
| 27 | 18'-5" | | 54 | 38'-5" | Gray RP Screen |



STAGE INFO AND MEASUREMENTS

SOFT GOODS:

All curtains are Black 16 oz velour, lined and are sewn flat. Note lineset schedule for typical hanging positions.

- **Main Curtain:** 2 Panels 27' wide x 29' high (Forest Green/ 25 oz velour/lined, 50% fullness). Guillotines, controlled SR. Does not travel.
- **Borders:** 4 60' wide x 12' high
- **Legs:** 6 Sets 12'-9" wide x 25' high (per panel)
- **Full Stage Split Black:** 2 Sets 35' wide x 25' high (per panel)
- **Full Stage Black:** 1 60' wide x 25' high
- **White plastic cyclorama:** 60' wide x 26'-8" high
- **Gray plastic cyclorama:** 60' wide x 26'-8" high
- **Black Sharkstooth Scrim:** 60' wide x 25'-0" high
- **Side Tabs:** 4 Panels per side; 8' wide x 25'-0" high, permanently installed

Some refurbished leg panels may be available. These are 27' high with no fullness.

ADDITIONAL SPACE:

Several multi-purpose rooms exist in the complex. Subject to availability, it is possible to utilize these rooms as offices, additional dressing rooms, rehearsal space, or work areas.



Progress Energy

Center for the Performing Arts

A.J. FLETCHER OPERA THEATER
TECHNICAL PACKAGE
PAGE 12 OF 21
REV. JAN. 2010



AUDIO INFORMATION

SOUND SYSTEM:

Twelve Renkus-Heinz TRC81KH and four TRC82K speaker enclosures ring the proscenium, supported by four BPS12-1 subwoofers, two on the floor and two in the upper proscenium corners. These are driven by three Crest CKS 800-2 and one CKS 400 power amplifiers, processed by a Yamaha DME 32 Digital Mixing Engine. Additional outboard processing includes an Ashly Protea four-channel processor, a DBX 1066 two-channel compressor/limiter, and a Klark-Teknik DN-360 stereo equalizer. This system typically uses a Midas Venice 32-channel console, but 32-channel and 48-channel Soundcraft Series Four consoles are also available.

Five patch bays on deck, three in the orchestra pit, and one on each pin rail make for complete and convenient patching capabilities. Two JBL Eon 15 Pak and two Eon Power 10s make up the hall's standard monitor rig. A six-wedge JBL monitor rig is available for an additional charge.

Three Crest CK-V amps power the 70-volt system, utilizing full coverage of all dressing rooms, rest rooms, lobbies, stairwells, production and spot booths for show program and paging. Paging can be accomplished via the Clear-Com main station announce feature, or from a separate mic or line level source at the stage manager's position. A full four-channel Clear-Com system allows communications to all production areas.

An additional small mixing console, a Mackie 1402 VLZ, lives in the stage manager's rack downstage right. Two Mackie HR824 studio reference monitors provide additional audio cue for the control booth. CD, mini-disc, cassette, and DAT formats are available.

A color front-of-house camera provides video coverage to a monitor at the stage manager's position, and video lines to all production areas make further monitoring possible. The listening-assisted system is a Starsound Infrared System 600 by Phonic Ear. The house does not supply batteries for battery powered audio equipment.



LIGHTING AND POWER INFORMATION

Electrics: Company Switch

Primary power is provided through two fused 400 amp 120/208 volt 3 phase 5-wire company switches located USC. Two additional 100 amp 120/208 volt Hubbell #5100 5-pin and sleeve, switched outlets are located DSL, two DSR and two on the SR end of the first FOH catwalk. A filled water pipe ground exist USL.

Total stage house power and locations:

- 2 - 400amp – 3 phase USC
- 2 - 100 amp – 3 phase Hubbell #5100 DSL
- 2 - 100 amp – 3 phase Hubbell #5100 DSR
- 2 - 100 amp – 3 phase Hubbell #5100 first catwalk
- 4- L6-30 (30 amp, 1ph, 120/240 volt) receptacles on third catwalk
- 2- L21-20 (20 amp, 3ph, 120/208 volt) receptacles on third catwalk at spot booth
- 1- L21-20 receptacle center of first and second catwalks, left and right pin rails, and left and right balcony boxes at the proscenium.

City of Raleigh electricians do all connects and disconnects. Adapters from Hubbell 5100 to (5) cam-lock females may be available.

Dimming & Control

All stage dimmers are ETC Sensor, D20E. There are 288 dimmers at 2.4kw each. House lights are in dimmers 289-312; all stage worklights and non-dims can be controlled by DMX. All positions are wired dimmer per circuit. There is no patch bay, breakout panel, or FOH transfer. The dimmer vault is located on the SL Pin Rail.

DMX isolation and patching is available in the control booth to outlets throughout the theatre. There is also a CAT-5 and a Coax data network system distributed throughout the theatre. The house console is ETC's Express 250, operating version 3.10 software. The house dimmers should be protected from any DMX source or receiver not provided by PECPA by means of an optical/electrical isolator.



LIGHTING AND POWER INFORMATION

Dimmer Allocation

| Position | Dimmers | Non-Dims | DMX and Data |
|------------------------------------|---------|----------|--------------|
| First Catwalk, 30' throw, ± 80° | 133-144 | 1-4 | Yes |
| Second Catwalk, 40' throw, ± 60° | 146-168 | 1-4 | Yes |
| Third Catwalk, 70' throw, ± 40° | 169-180 | 1-4 | Yes |
| | | | |
| HL Balcony Rail | 202-211 | | No |
| HR Balcony Rail | 181-190 | | No |
| Ctr Balcony Rail, 30' throw, ± 10° | 223-232 | 1-4 | Yes |
| | | | |
| First Electric | 1-24 | | No |
| Second Electric | 25-48 | | No |
| Third Electric | 49-72 | | No |
| Fourth Electric | 73-96 | | No |
| Fifth Electric | 97-120 | | No |
| SR multi drops | 121-132 | | No |
| | | | |
| DSL Deck | 235-243 | 5-8 | Yes |
| USL Deck | 253-261 | 5-8 | No |
| DSR Deck | 244-252 | 5-8 | Yes |
| USR Deck | 262-270 | 5-8 | No |
| | | | |
| Orchestra Pit | 271-276 | | Yes |
| SL Jump | 277-282 | 9-12 | Yes |
| SR Jump | 283-288 | 9-12 | Yes |



LIGHTING AND POWER INFORMATION

Lighting Instrumentation & Accessories

All instrumentation is equipped with C-clamps, safety cables and gel frames. A plot of the house hang is available in DWG file format:

- Third Catwalk 20- Source Four 10°, 575w
- Second Catwalk 22- Source Four 19°, 575w
- First Catwalk 14- Source Four 26°, 575w
- 2- Robert Juliat Korrigan follow spots – 1200w
 Throw from the spot booth is 70' to the plaster line,
 at a 40° above horizontal.

- HL Balc Rail 4- Source Four 26°, 575w
 4- Source Four 36°, 575w
- Ctr Balc Rail 2- Colortran 8" Fresnels, 1000w (curtain warmers)
 1- Source Four 19°, 575w
 1- Source Four 26°, 575w
 9- Source Four 36°, 575w
- HR Balc Rail 4- Source Four 26°, 575w
 4- Source Four 36°, 575w

Available overstage:

- 16- Source 4 36 degree 575w
- 40- Source 4 26 degree 575w
- 12- Source 4 19 degree 575w
- 24- Source 4 Parnels 750w

- 8- 3 cell Altman cyc light 1kw model FC-1
- 4- Miniten 500w or 1kw



Progress Energy

Center for the Performing Arts

A.J. FLETCHER OPERA THEATER
TECHNICAL PACKAGE
PAGE 17 OF 21
REV. JAN. 2010

LIGHTING AND POWER INFORMATION

Lighting Instrumentation & Accessories

CABLE: All single cable is 12/3 type SO, all multi-cables are 12/14. All connectors are 20 amp stage pin, VSC 19-pin, or compatible.

- 4 50'
- 20 25'
- 20 15'
- 30 10'
- 30 5'
- 30 Twofers

The house can supply color media, templates, or gaffer's tape at additional charge.

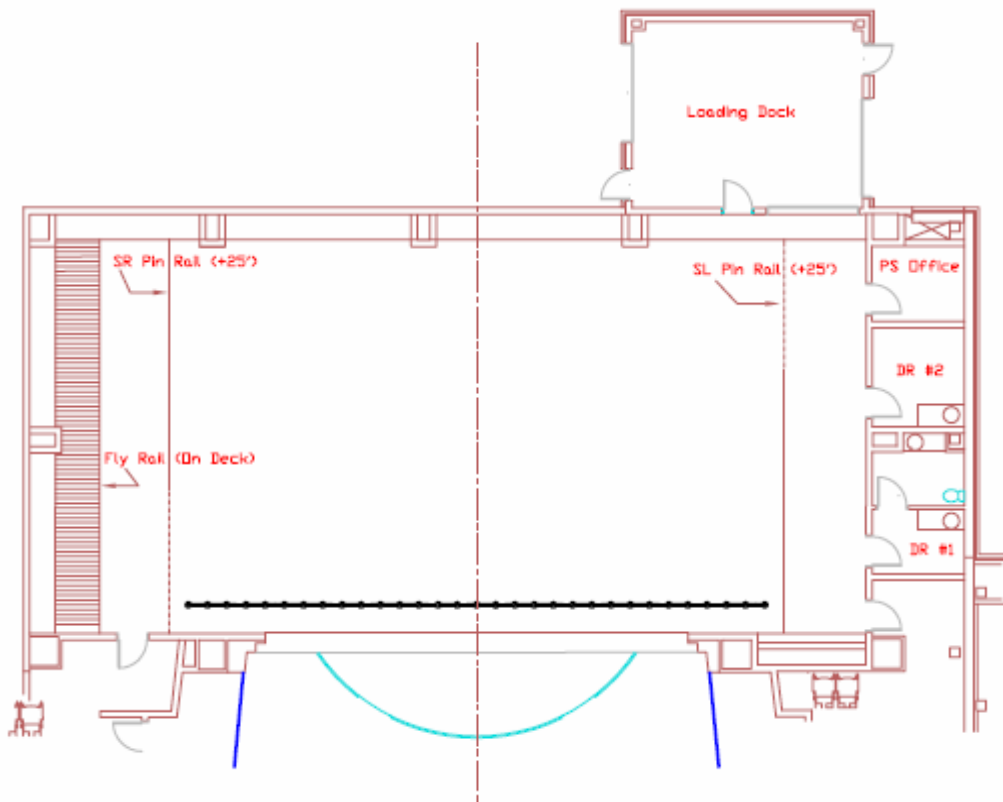


Progress Energy

Center for the Performing Arts

A.J. FLETCHER OPERA THEATER
TECHNICAL PACKAGE
PAGE 18 OF 21
REV. JAN. 2010

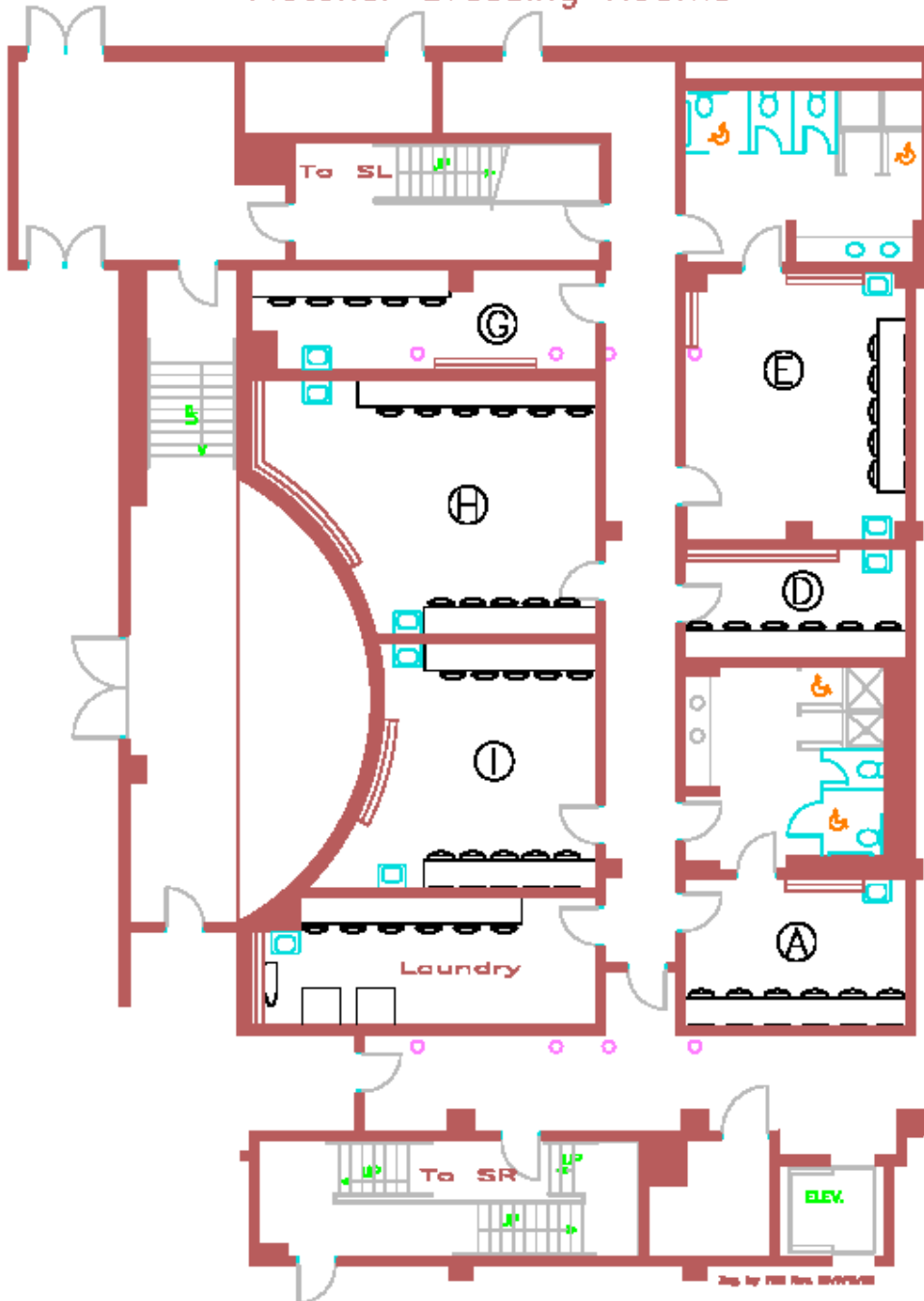
STAGE DRAWING





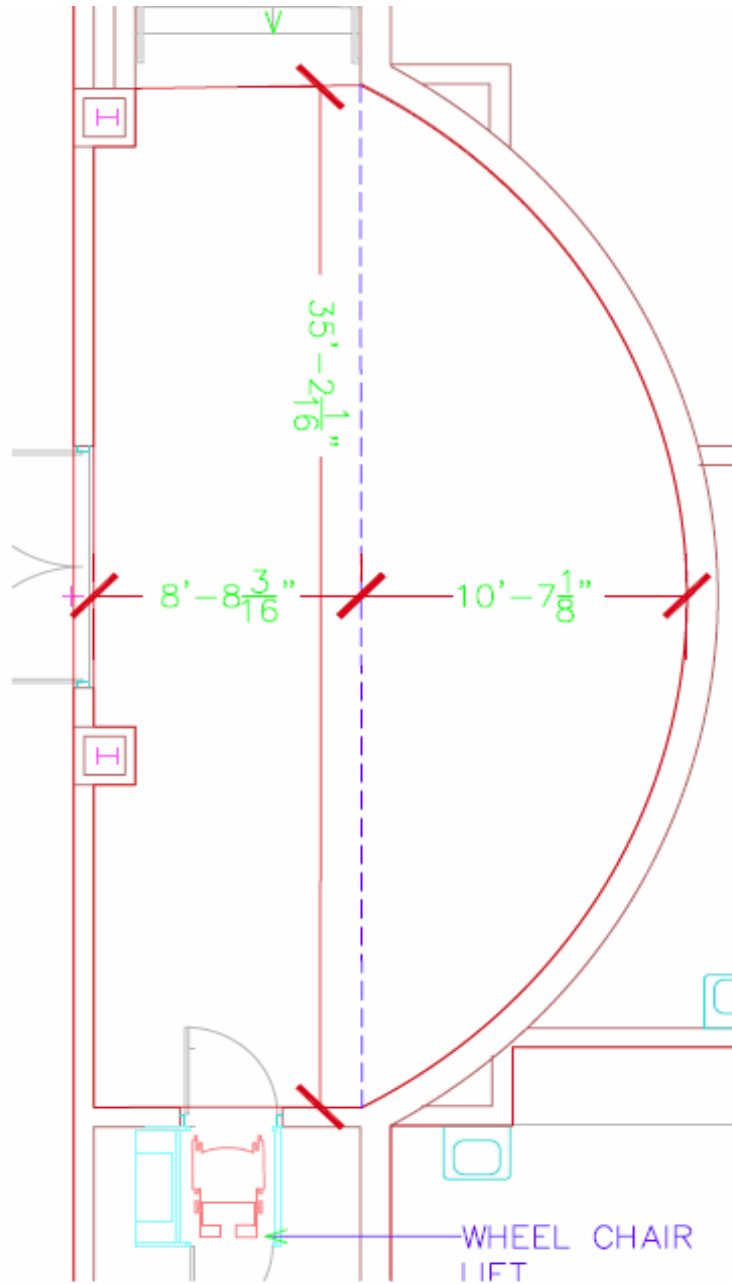
DRESSING ROOMS

Fletcher Dressing Rooms

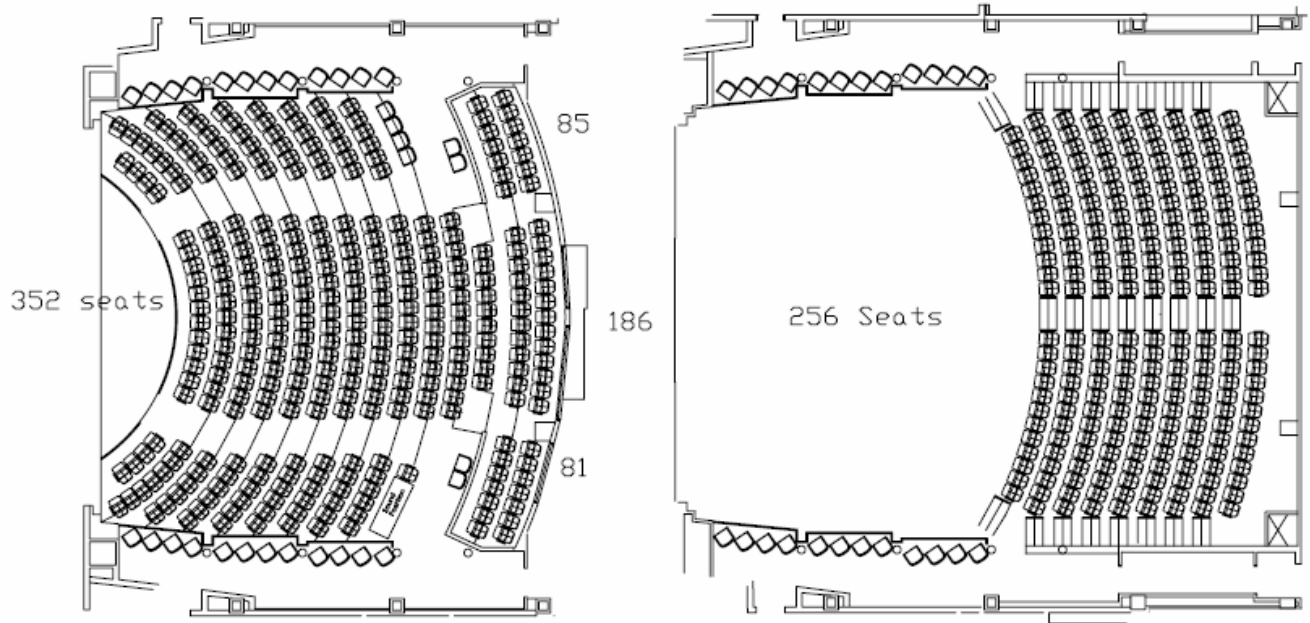




PIT DIMENSIONS



SEATING CHART



A.J. Fletcher Opera Theatre Seating